

Since 1968

COMMAX
SmartHome & Security

User Manual

Color Video Door Phone CAV-40QG



www.commax.com

COMMAX Co.,Ltd.



- Thank you for purchasing COMMAX products.
- Please carefully read this User's Guide (in particular, precautions for safety) before using a product and follow instructions to use a product exactly.
- The company is not responsible for any safety accidents caused by abnormal operation of the product.



Table of contents

Table of contents	1
1. Greetings	1
2. Warnings and caution	2
3. Part names and functions	4
4. Operating	5
5. Set up	6
6. The use of lobby phone	10
7. Installation method	11
8. Wiring method	11
9. Parts list	12
10. Cautions in use	13
11. Miscellaneous	13
12. Specification and features	13



1. Greetings

- Thank you very much for choosing COMMAX.
- Please read this manual carefully before you use the product.



2. Warnings and caution

Please follow the things described below in order to prevent any danger or property damage.



Warning

It may cause a serious damage or injury if violated.



Caution

It may cause a minor damage or injury if violated.



Prohibition.



No disassembly



No touch



Must follow strictly.



Shows plugging out the power cord without an exception



Shows the warning and caution for an electric shock.



Shows the warning and caution for a fire.



Warning

Power & Installation

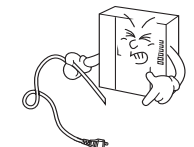
Please don't use several products at the same time on one power socket.

- It may cause a fire due to an abnormal overheating.



Please don't bend the power cable excessively or it may cause an electric shock.

- fire when using a damaged power cable.



Please don't handle the power cable with a wet hand.

- It may cause an electric shock.



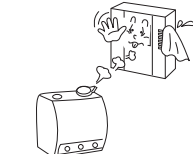
Please plug out the power cable from the socket when not using it for a long period of time.

- It may shorten the product lifespan or cause a fire.



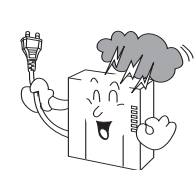
Please don't install the product in the place where there is much oil, smoke or humidity.

- It may cause an electric shock or fire.



Please don't install the product with the lightning and thunder.

- It may cause an electric shock or fire.



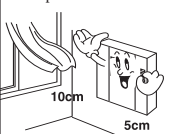
Please don't use and connect this product with other products with different rated voltage

- It may cause a disorder or fire.



When installing the product that generates heat, please install the product away from the wall (10cm) for the ventilation.

- It may cause a fire due to the increased internal temperature.



! Warning

Cleaning & Use

Please don't disassemble, repair or rebuild this product arbitrarily (please contact the service center if a repair is needed).

- It may cause an electric shock or fire.



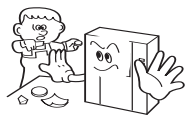
If an abnormal sound, burning smell or smoke is coming out of the product, please plug out the power cable and contact a service center.

- It may cause an electric shock or fire.



Please don't insert any metallic or burnable materials into the ventilation hole.

- It may cause an electric shock or fire.



Please use only the designated batteries for the products of using DC power.

- It may cause an electric shock or fire.

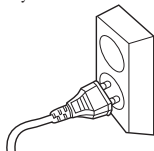


! Caution

Power & Installation

Please plug the power cable firmly into the inner end

- It may cause a fire.



Please hold the plug tightly when unplugging the power cable (a part of the copper wire may be disconnected if the grabbing is only made on the cord when pulling out the cable).

- It may cause an electric shock or fire



When connecting the power cables after cutting the cable, please install the product with power off

- It may cause an electric shock or fire

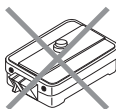


When installing the product, please fix it firmly while using the wall-mounting unit and screws.

- It may cause an injury from the falling object.



Please be careful when using an AC circuit breaker since there is a possibility of an electric shock.



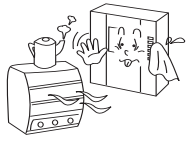
Please check the use voltage and current for the DC-only products and use the appropriate rectifier.

- It may cause a fire.



Please avoid direct rays of the sun or heating devices at a time of installation.

- It may cause a fire.



Please don't install the product on an unstable place or small support board.

- It may cause an injury if it falls down while in use.



Cleaning & Use

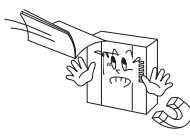
When cleaning the product, please rub it with a soft and dry cloth after plugging out the power cable. (Please don't use any chemical products such as wax, benzene, alcohol or cleanser.)



Prohibition

Please don't drop the product on the ground and don't apply a shock.

- It may cause a failure.



Prohibition

Please use the designated connection cable within the maximum calling distance designated for the product

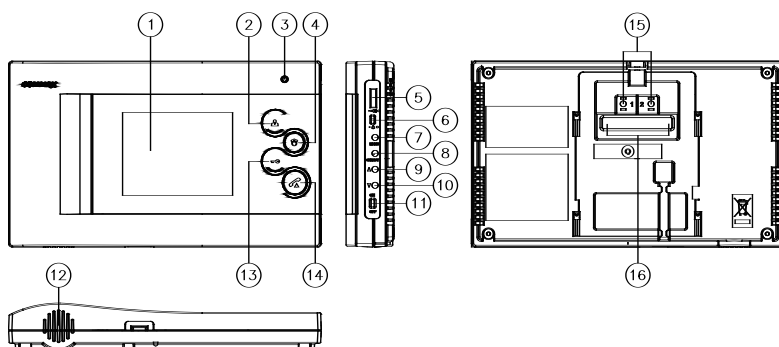
- It may reduce the product performance.



Request



3. Part names and functions



NO.	Name	NO.	Name	NO.	Name
1	Monitor	7	Menu button	13	Door release button
2	Door button	8	SEL button	14	Talk button
3	Microphone	9	UP button	15	DC 18V(Only DC) (1 : +, 2 : -)
4	Guard button	10	DOWN button	16	Terminal for external connection
5	Conversation volume dial	11	Power ON/OFF switch		
6	Ringing tone dial	12	Speaker		

- Conversation volume dial : Control the voice level coming from the outside unit.
- Ringing tone dial : Control the call sound level.



4. Operating

1. Call from door camera

- ① Visitor's image will be shown on the monitor with emitting chime sound when a visitor press the call button on the door camera at the entrance.
- ② Press the talk button by watching visitor, and talk with a visitor. Press the Open button and door will be open.
(Door release will be operating during monitor is on)
- ③ If lobby phone or guard station call to monitor during it is talking to individual door camera, electric chime will make sound.
Then, press talk button and talking with individual camera will finished and start to talk to lobby phone or guard station.
- ④ Maximum talk time is 60 seconds and if more talk is needed, press talk button again.
- ⑤ Then press the talk button after the end of talking with a visitor, conversation mode will be turned into Standby mode.

2. Call from lobby phone

- ① Visitor's image will be shown on the monitor with emitting chime sound when the visitor presses the call button on the lobby phone.
- ② Press the talk button by watching visitor, and talk with a visitor. (Screen is off after 60 sec automatically from the beginning of conversation)
- ③ If door camera calls to monitor during it is talking to lobby phone, electric chime will make sound.
Then, press Door button and talking with lobby phone will finished and start to talk to door camera.
- ④ To release the door lock during conversation, press the door release button.

3. Talk with guard station

(1) Call from guard station

- ① Melody announcing the call will be emitted when monitors have a call from the guard station.
- ② Press the talk button and conversation will begin.
- ③ If door camera calls to monitor during conversation with guard station, visitor's image will be shown on the monitor with lower chime. Then, press the button to end the talk with guard station and talk with visitor.

(2) Call to guard station

- ① Press talk button and press guard button.
- ② Start the talk with guard station.

4. Monitoring

(1) In case both lobby and individual cameras are installed

Click the monitor button once in standby mode to check the images from Individual camera. Click the button twice for Lobby images and three times for returning to standby mode. (Note. it is not available during the talk)

(2) Click monitor button once in standby mode to check the images from lobby and click the button twice to return to standby mode



5. Set up

■ Use 4 function keys positioned right side of the product.

Finishing Menu : MENU

Select or Input : SELECT

Move upward / rightward : △

Move downward / leftward : ▽

1. Video adjustment

- Press the MENU button in use of conversation or monitoring, then adjust DOOR(LOBBY), VIDEO SET, UTIL SET and INFORMATION using △/▽ button.

1-1. DOOR(LOBBY) VIDEO SET

- In video adjustment mode, move to DOOR(LOBBY) VIDEO SET and press SELECT button (LOBBY VIDEO SET should be done during calling from lobby phone or talking with lobby phone)

(1) BRIGHTNESS : Adjust BRIGHTNESS

(2) CONTRAST : Adjust CONTRAST

(3) COLOR : Adjust COLOR

* Adjusting Brightness/Contrast/Color

① Move to the desired menu with △/▽ button

② Press the SELECT button to enter the menu. (Adjusting level bar is shown)

③ Adjust the values with △/▽ button

④ Press the SELECT button to return to menu

(4) RESET : Initializing Brightness/Contrast/Color value

* Adjust RESET

- ① Move to the desired menu with \triangle/∇ button
- ② Press the SELECT button to enter the menu. (Adjusting level bar is shown)
- ③ Adjust the values with \triangle/∇ button and select YES
- ④ Press the SELECT button

※ Caution : Adjusting display setting and initializing the system is applied to connected devices separately. (DOOR / LOBBY)

(5) EXIT : Finish the setting menu with SELECT button.

- ① Move to the desired menu with \triangle/∇ button.
- ② Press the SELECT button.

1-2. UTIL SET(Additional function)

- In video adjustment mode 5-1, move to UTIL SET and press SELECT button.

(1) LED DIMMING : Setting LED on the button for stand by mode. (Power LED function)

- ① Select No. 1 : Talk LED is repeated bright and dark mode
- ② Select No. 2 : All LEDs are repeated bright and dark mode
- ③ Select No. 3 : All LEDs are repeated bright and dark mode by turns

* Adjust LED dimming

- ① Move to UTIL SET and press SELECT button and Move to LED dimming menu with \triangle/∇ button.
- ② Press the SELECT button to enter the menu. (Adjusting level bar is shown)
- ③ Adjust the values with \triangle/∇ button.
- ④ Press the SELECT button.

(2) SOUND MUTE : Setting MUTE mode.

* Adjust SOUND MUTE

- ① Move to UTIL SET and press SELECT button and move to SOUND MUTE menu with \triangle/∇ button.
- ② Press the SELECT button to enter the menu. (Adjusting level bar is shown)
- ③ Adjust SOUND MUTE with \triangle/∇ button.
- ④ Press the SELECT button.

(3) EXIT : Return to 5-1 video adjustment.

* Adjust EXIT

- ① Move to UTIL SET and press SELECT button and move to EXIT menu with \triangle/∇ button.

- ② Press the SELECT button.

1-3. INFORMATION (Model name and software version information)

- In video adjustment mode 5-1 or system adjust mode 5-2, check model name and version with \triangle/∇ button.

- (1) Model : Product name [CAV-40GQ]
- (2) Version : Software version
- (3) HOME ID : building number / room number
- (4) VIDEO : video format type
- (5) SOURCE : Currently input device(DOOR / LOBBY)

1-4. EXIT (EXIT from Video adjust mode)

- In video adjustment mode 5-1, move to EXIT and press SELECT button.

2. System set up

- After pressing MENU button for 3 seconds, set HOME SET and INFORMATION using \triangle/∇ button.

2-1. HOME SET (House hold information input)

- In system setting mode 5-2, move to HOME SET menu and press SELECT button to go setting menu.

- (1) HOME ID SET : Setting the building / house hold information

* Setting process

- ① In system setting mode 5-2, move to HOME SET and press SELECT button and move to HOME ID SET with \triangle/∇ button.
- ② Press SELECT button.
- ③ Current building/house hold information will be displayed [Caution : Default value is 1234(Building – 5678(House hold))]
- ④ Input the value with \triangle/∇ button and SELECT button from the 1st digit. :
Default on household number is 8 digit numbers. Blanks are marked with 0.
(ex : Building no: 101 Household no.: 1 (0101 – 0001)
Wrong number can be modified with \rightarrow button.
- ⑤ Household number is changed when finish inputting 8-digit number and save it pressing SELECT.

- (2) PASSWORD : Changing house hold pass word

* Setting process

- ① In system setting mode 5-2, move to HOME SET and press SELECT button and move to PASSWORD with \triangle/∇ button.
- ② Press SELECT button to enter the mode
- ③ Input desired number with \triangle/∇ and SELECT button.
(When register 4-digit number, it will be changed automatically to new number.)
(Default value: 1234)

※ Caution : Be sure to use same number for security aspect.

(0000 and 1234 is not usable for password for security reason)

(3) EXIT : Return to system setting mode 5-2

* Setting process

- ① In system setting mode 5-2, move to HOME SET menu and press SELECT button and move to EXIT with \triangle/∇ button.
- ② Press SELECT button.

2-2. INFORMATION (Model name and software version information))

2-3. EXIT (Exit from system setting mode)

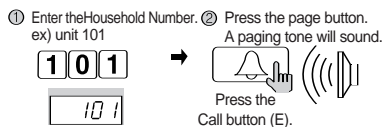
In system setting mode 5-2, move to EXIT and press SELECT button.



6. The use of lobby phone (In case there are common lobby)

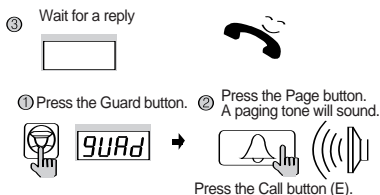
1) When paging the household

- Enter the household number you want to call.
ex) household 101 ⇒ 1, 0, 1
- Household number appears on FND
- Press the Call button (E)
- Conversation begins when they answer.



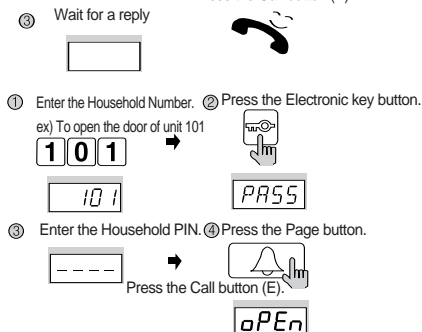
2) When paging guard station

- Press the guard button
- 'gUAd' appears on FND
- Press the Call button (E)
- Emit call house along with flickering of 'gUAd'.
- Conversation begins when guard station answers.



3) Opening the door with RF card

- Press the Household number
- Press the Key button (K)
- Letters of 'PASS' flicker on the FND.
- Press the 4-digit password.
- Appears '----' on the FND.
- Press the Call button
- Door is open with flickering of 'oPEn' on FND.



[Reference for use]

Contact guard station or management station if you don't remember the password

4) Opening the door with registered RF card (optional function)

- Put the RF card on the sensor positioned right below of camera lens to open the door. Door will be opened along with a message of 'oPEn' on FND.



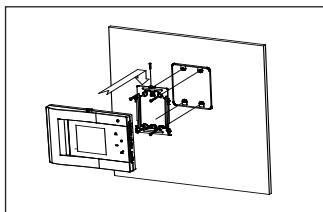
[Reference for use]

1. If you try to open the door with unregistered RF card, it will be notified to guard station. Please try again after registering it at the guard station or management office.
2. If RF card still doesn't work after proper registering procedure, it is not usable card.



7. Installation method

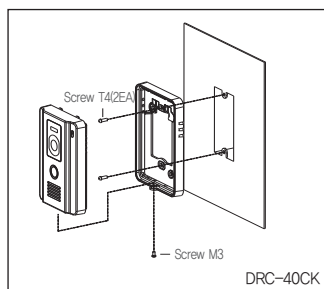
1. Installation Method of camera monitor



! Caution

- ① Keep out of direct sunlight.
- ② Proper installation height is at 145~150Cm from the ground.
- ③ When to install it, avoid the place where can be influenced by Magnetism Humidity, Direct light and heater

2. Installation Method of camera

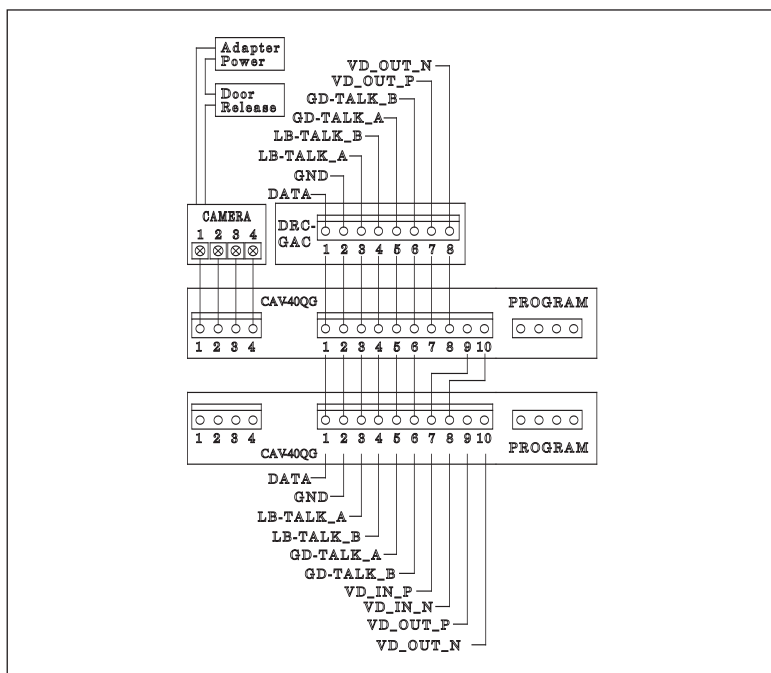


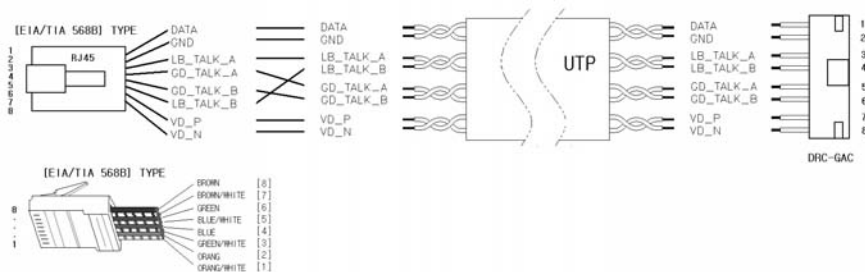
! Caution

- ① Keep out of direct sunlight or backlight.
- ② Keep the lens cleaned.



8. Wiring method



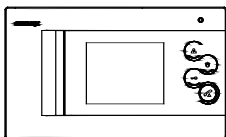


2. Cautions for wiring

- 1) If it is to be installed near high voltage line, please use coaxial cable for grounding.
- 2) Keep the cable out of the sheath exposure to prevent to be shorted.
- 3) Be sure to turn off the monitor before you connect the monitor with cameras.
- 4) Be careful of the polarity of the cable when you connect the monitor with cameras.
- 5) You don't need to consider polarity of the cable in connection with a guard station unit.



9. Parts list



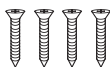
CAV-40QG



Wall mount bracket



User manual



(T)4 X 18mm
Screws for mounting



(M)3 X 6mm
Screws for main body



4P(1EA), 10P(1EA)
Connector



10. Caution in use

1. Turn on the power switch.
2. Please contact your local agent for product maintenance when you have a problem in use of CAV-40QG
3. For your safety, power switch with a safety device must be used in your building.
4. Unplug before installing or repairing the product.
5. Unplug when you connect monitor with door cameras.



11. Miscellaneous

- Please carefully read this User's Guide before calling service man

After checking the entire check list, please contact customer service center. We will do our best to make you satisfy with our services.



12. Specifications & Features

Spec	Model	CAV-40QG
Power source	100-240V~, 50/60Hz	DC 18V, 1A
Power consumption	Operation : 10W, Standby : 4W	
Wires	Individual door : 4 wires(polarity), Lobby : 8 wires(polarity)	
Screen	4" TFT LCD	
Communication	Full Duplex communication (Handsfree)	
Ringing tone	Individual door : Electric sound(3 tones 2 consecutive). Guard station : Electric chime	
LOBBY / CAMERA		
Talk Duration	60 ± 10sec	
GUARD		
Talk Duration	180 ± 10sec	
Distance	Individual camera : 28m(∅ 0.5) / Common lobby : 300m(UTP) / Guard station : 1Km	
Temperature	0 ~+40℃ (32°F ~ 104°F)	
Dimension	235.5(W) x 140(H) x 36(D)mm	



COMMAX Co.,Ltd.

513-11, Sangdaewon-dong, Jungwon-gu, Seongnam-si, Gyeonggi-do, Korea

Int'l Business Dept. Tel. : +82-31-7393-540~550 Fax. : +82-31-745-2133

Web site : www.commax.com